



INTRODUCTION

지명원

귀사의 발전을 진심으로 기원합니다.

저희 (주)코리아싸인은 귀사가 진행하는 프로젝트에 협력업체로 지명 받고자 다음과 같이 지명원을 제출 하오니 검토하신 후 지명하여 주시기 바랍니다.

I sincerely wish your company the best of luck

Korea Sign Co., Ltd. submits a nomination application to be nominated as a partner for the project you are working on, so please review and nominate it.

(주)코리아싸인 대표이사

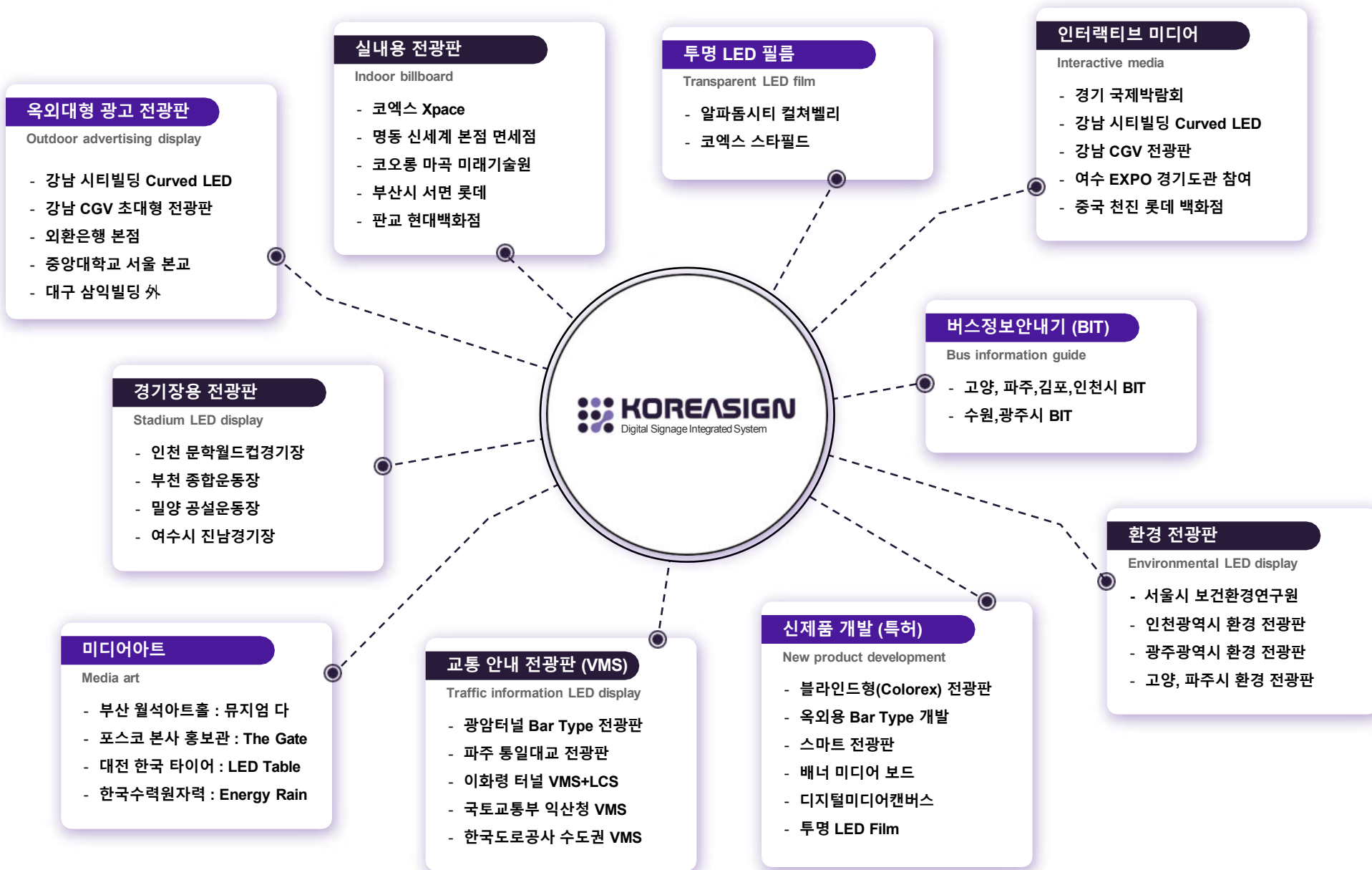
CEO of Korea Sign Co., Ltd

INDEX

- ① 회사소개 Company Introduction
- ② 사업실적 Business Performance
- ③ 신제품 및 기술력 소개 New Product
- ④ 인증서 및 등록증 Certificate



01 — COMPANY INTRODUCTION



01 — COMPANY INTRODUCTION

Business Developer

최적의 위치선정 및 고객 친화적인 매체 제시

Optimal location selection and customer-friendly media presentation

System Developer

지능형 컨트롤러 및 다양한 솔루션 제공

Intelligent controller and various solutions provided

Information Developer

지식경영이 가능한 차별화된 광고모델 구현

Differentiated products capable of knowledge management



Full Color LED Display

- 환경 친화적인 설계
Eco-friendly design
- 고객 지향형(절전형) 모듈
Power saving module
- 지능형 컨트롤러
Intelligent controller



Indoor and Outdoor LED Display

- 다양한 솔루션
A variety of solutions
- 최상의 품질
Best quality
- 자체개발 솔루션 보유
Development solution



Interactive Media

- 새로운 광고 전략
New advertising strategy
- 양방향 커뮤니케이션
Interactive communication
- 차별화된 어트랙션 구축
Differentiated Attractions

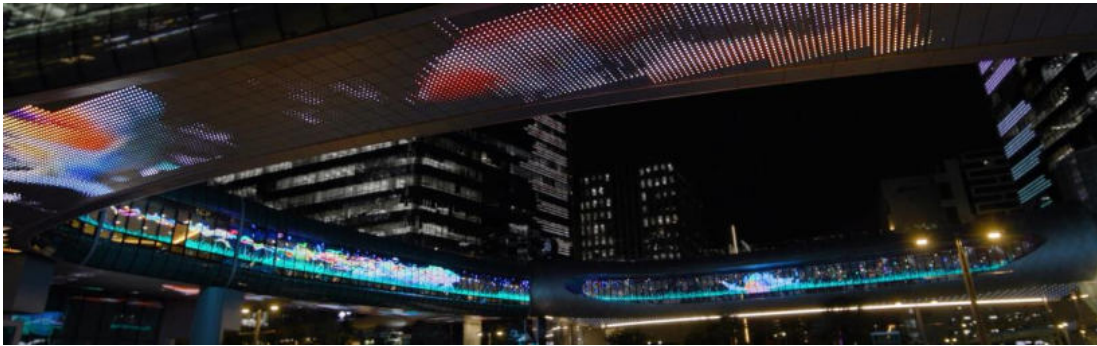
02 — BUSINESS PERFORMANCE

I 투명 LED 전광판 _ Transparent LED Film Digital Signage



02 — BUSINESS PERFORMANCE

I 투명 LED 전광판 _ Transparent LED Film Digital Signage



02 — BUSINESS PERFORMANCE

I 투명 LED 전광판 _ Transparent LED Film Digital Signage

1. Brightness

Pitch 8, 10mm의 밝기는 옥외표출에 최적화 되어 있으며 (6000cd/m²이상), 기존 유리면에 반사되는 가시광선에도 볼 수 있는 고휘도 밝기로 표출됨

Pitch 8, 10mm Brightness is over 6000cd/m²
High brightness visible even in visible light

2. Thin & Light

부드럽고 투명한 자체 접착 필름 LED 디스플레이

Soft film LED display
Soft transparent self-adhesive film LED Display

3. Installation Process (설치 과정)

REAR GLASS

TRANSPARENT LED FILM

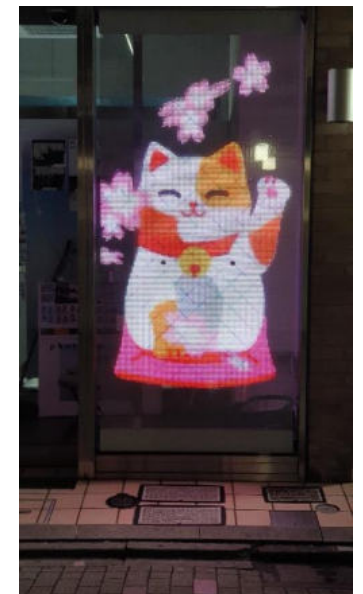
STRUCTURAL GLASS

사이드 프레임을 통해 UNIT별 조립. 설치 기존 현장 방식보다 빠르며 안전
Unit Assembling → Securing ease of installation compared to existing glass attaching types



02 — BUSINESS PERFORMANCE

I 투명 LED 전광판 _ Transparent LED Film Digital Signage



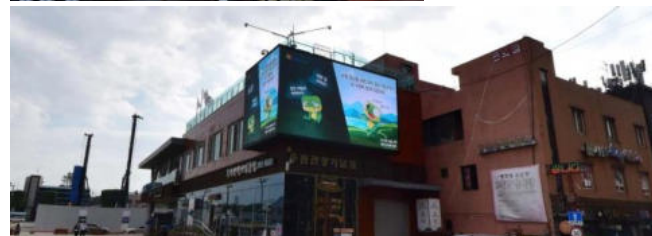
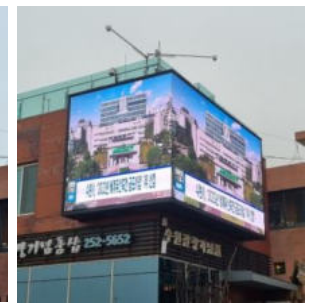
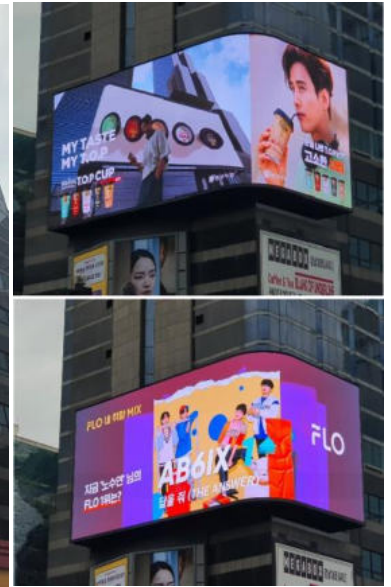
02 — BUSINESS PERFORMANCE

I 투명 LED 전광판 _ Transparent LED Film Digital Signage



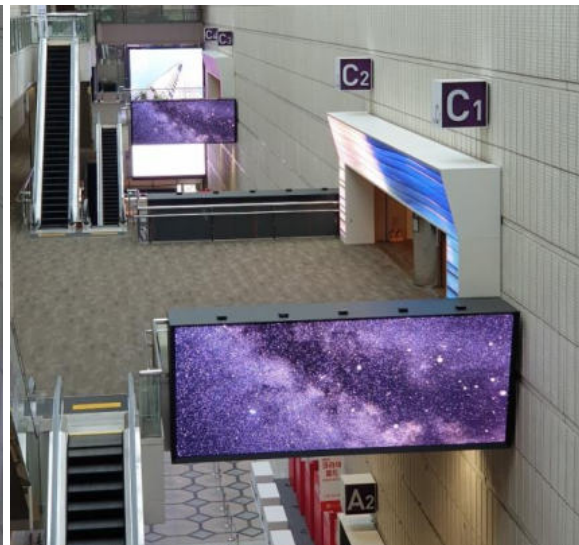
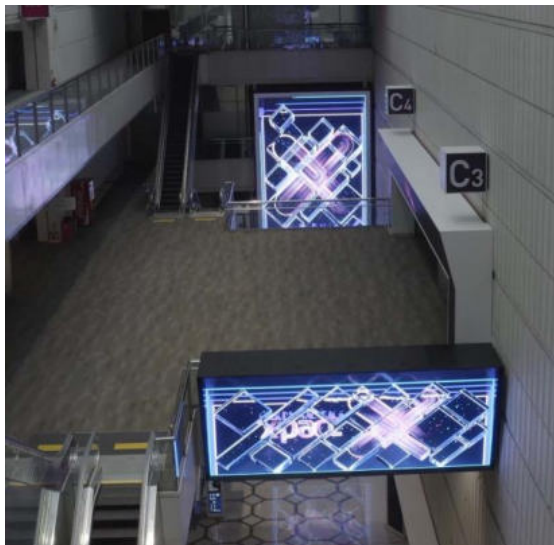
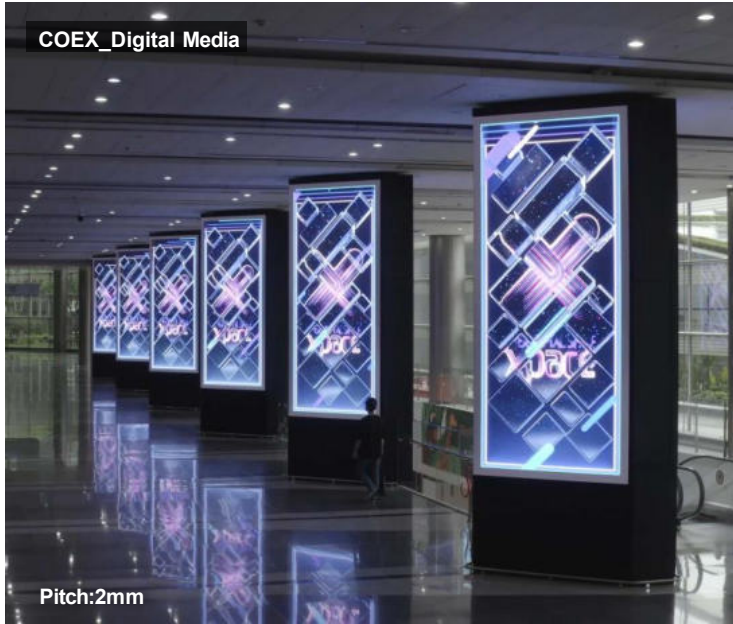
02 — BUSINESS PERFORMANCE

I Outdoor _ Interactive Curved LED



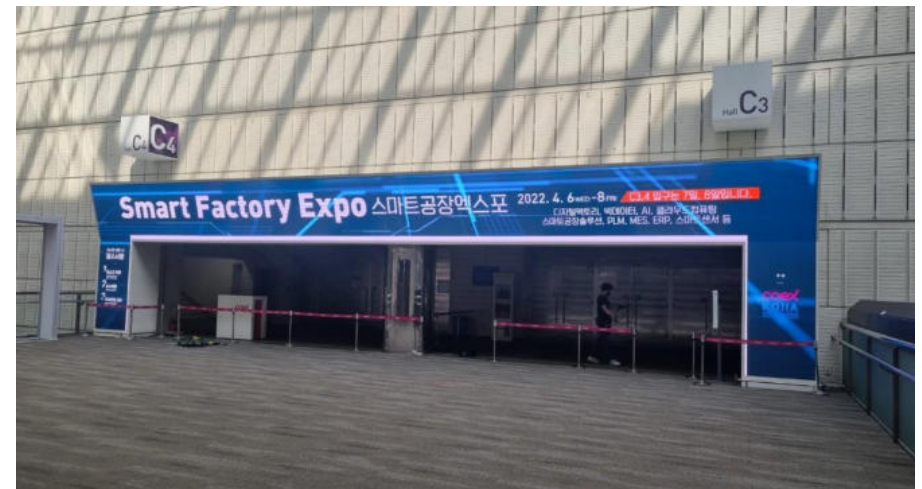
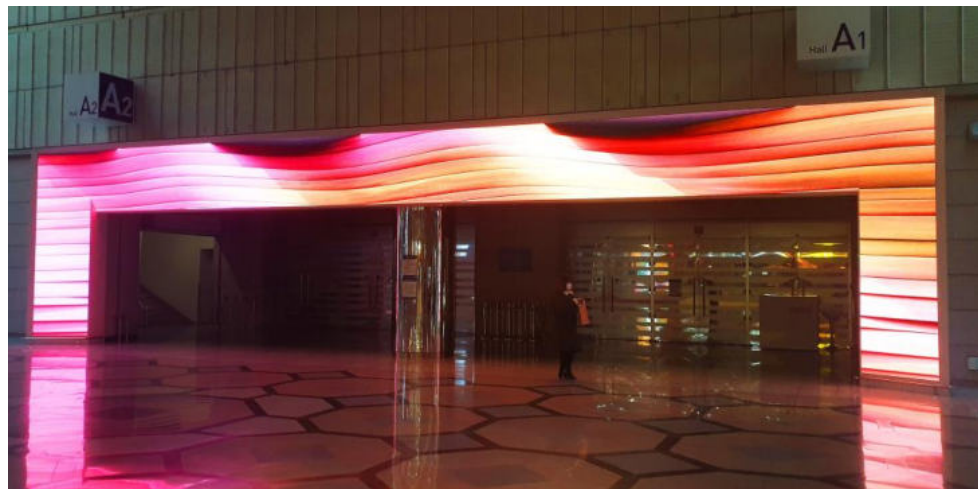
02 — BUSINESS PERFORMANCE

I Indoor _ Exhibition LED



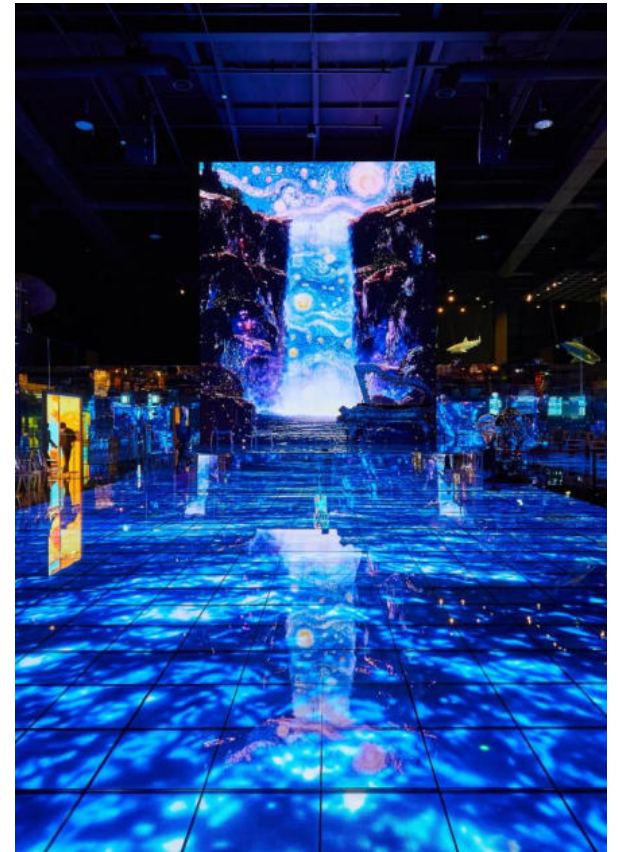
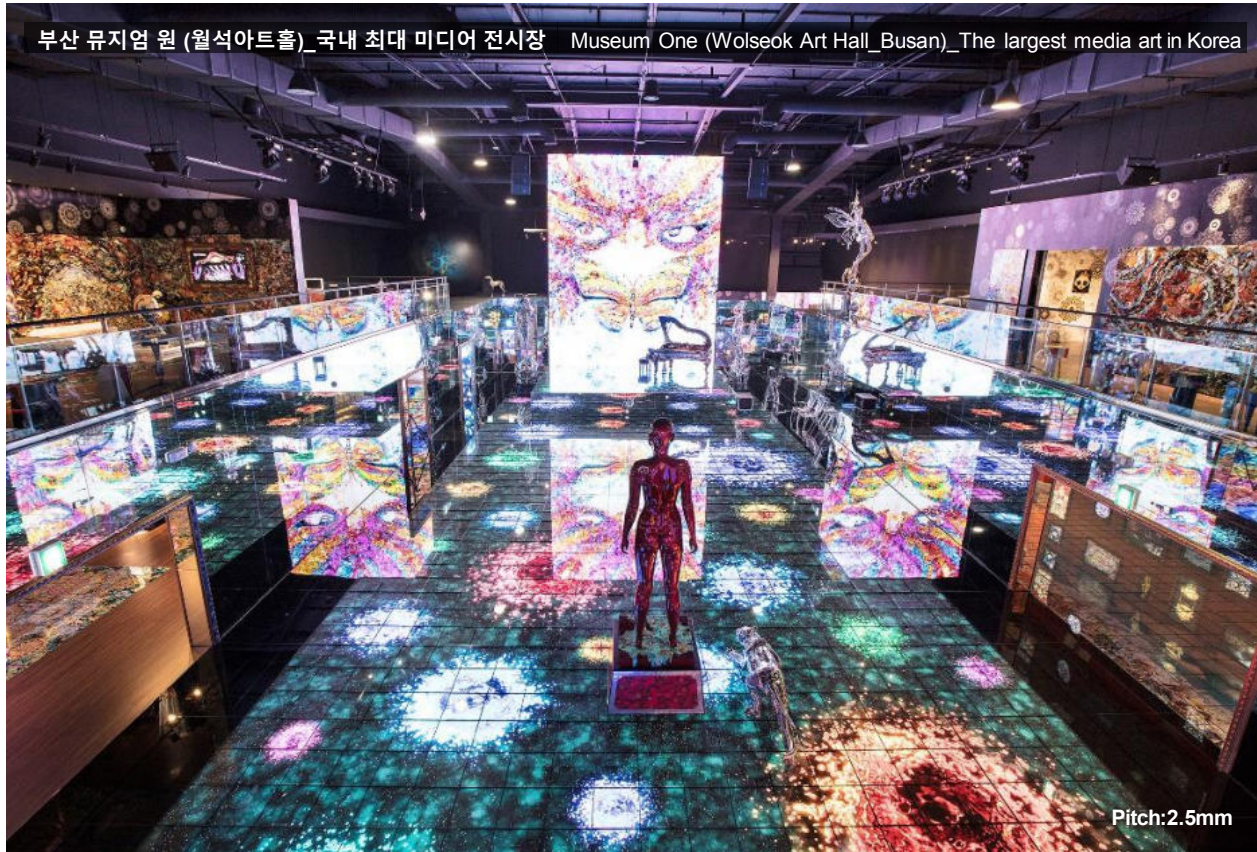
02 — BUSINESS PERFORMANCE

I Indoor _ Exhibition LED



02 — BUSINESS PERFORMANCE

I Indoor _ Exhibition LED



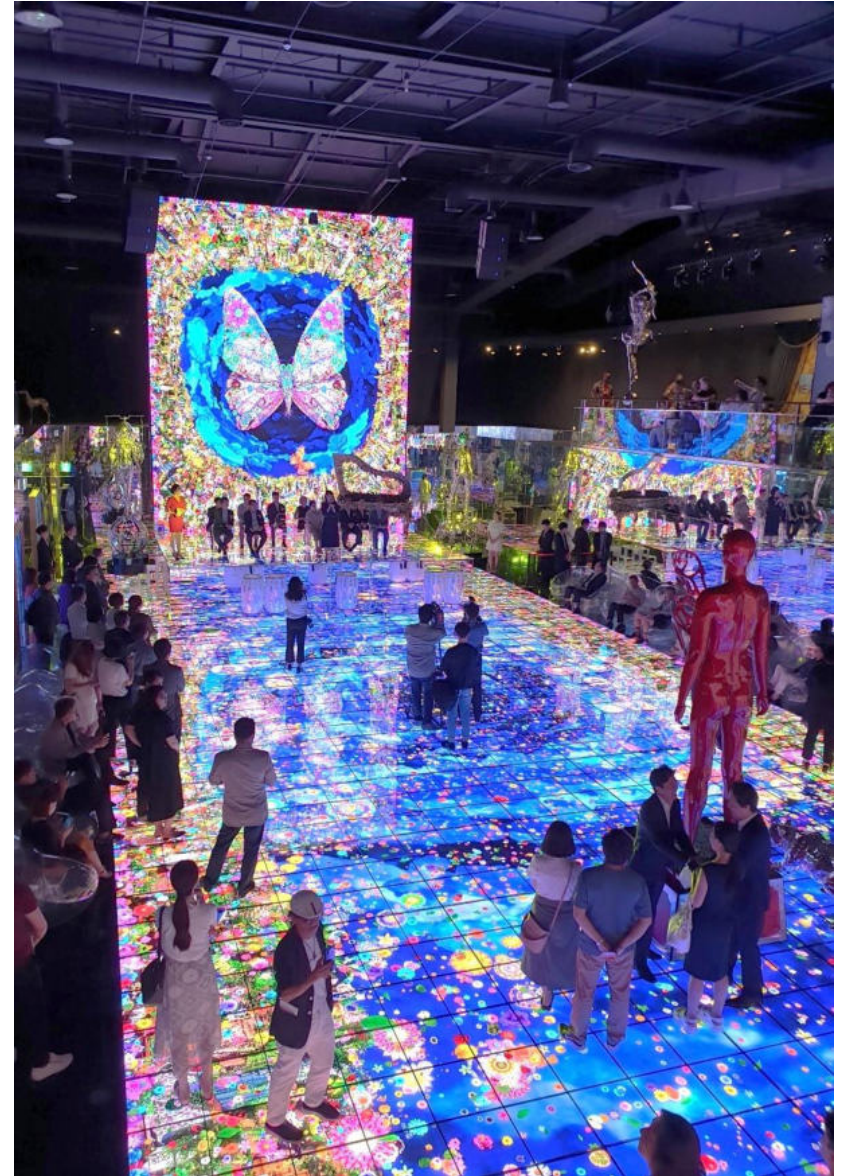
02 — BUSINESS PERFORMANCE

I Indoor _ Exhibition LED

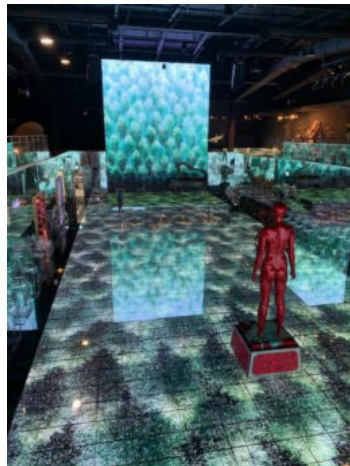
부산 뮤지엄 원 (월석아트홀)_국내 최대 미디어 전시장

Pitch:2.5mm

Museum One (Wolseok Art Hall_Busan)_The largest media art in Korea

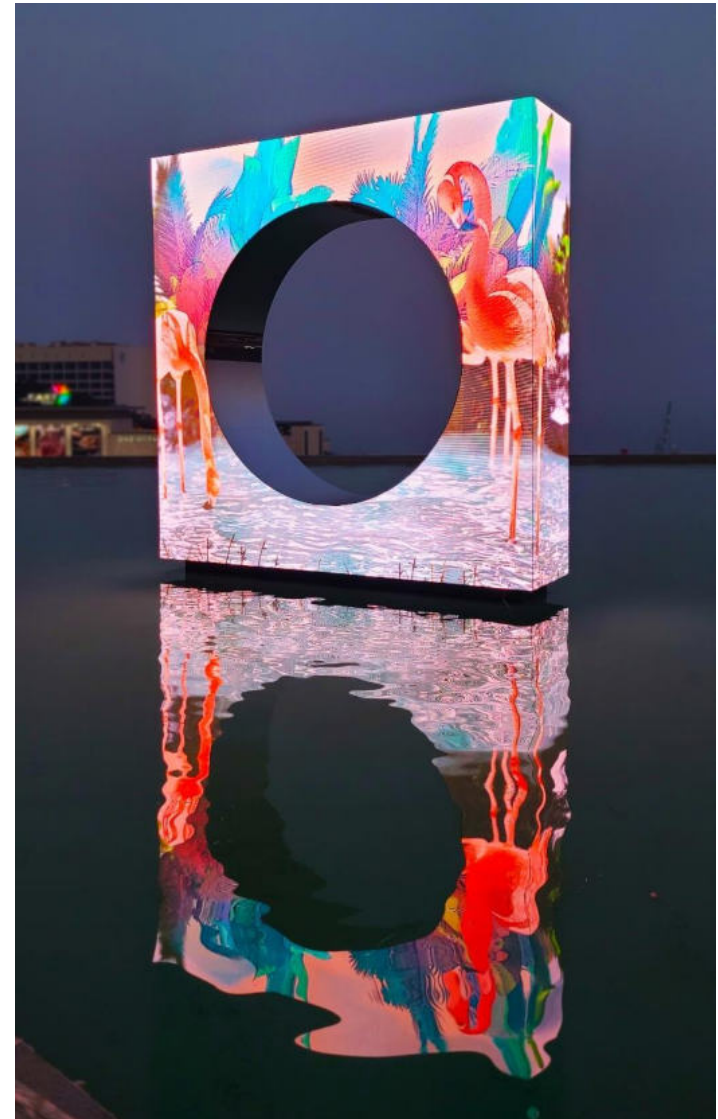
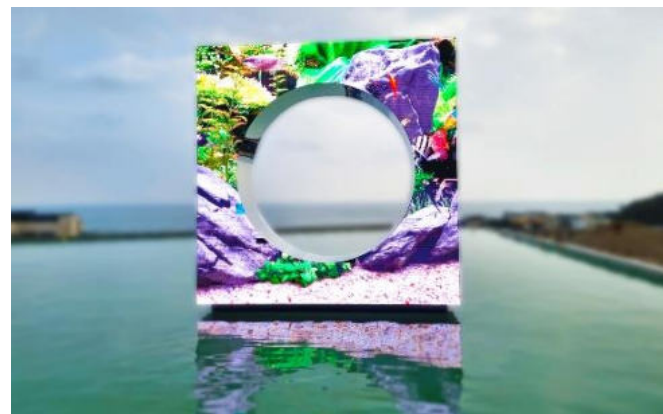
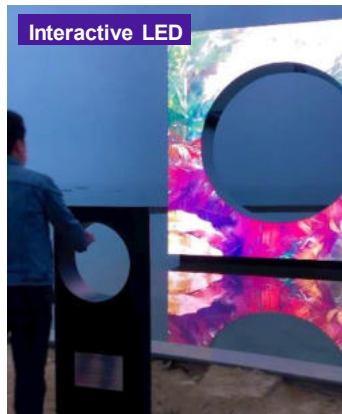


Interactive Table



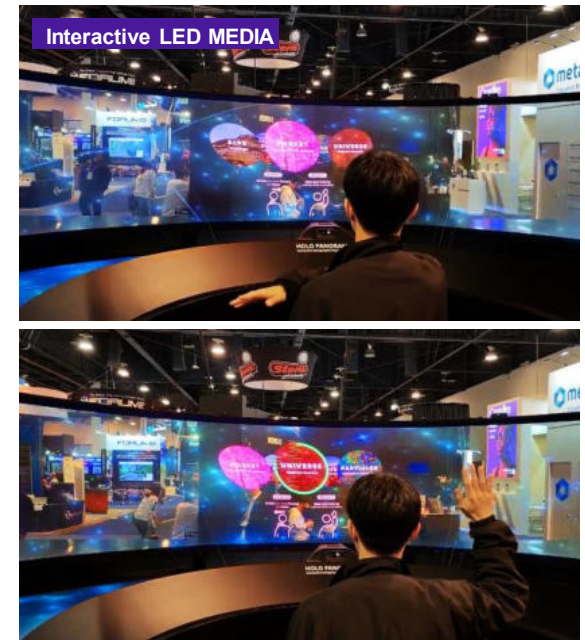
02 — BUSINESS PERFORMANCE

I Outdoor _ Exhibition LED



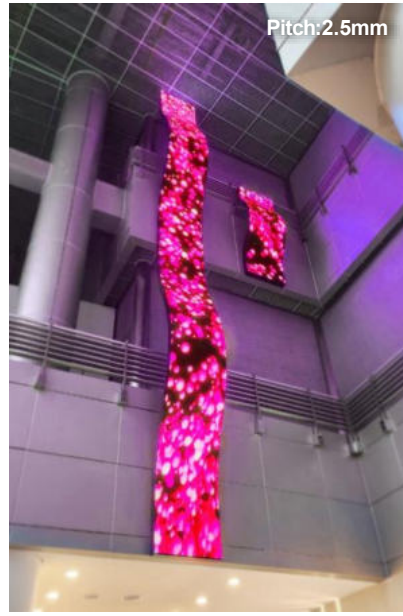
02 — BUSINESS PERFORMANCE

I Indoor _ Exhibition LED



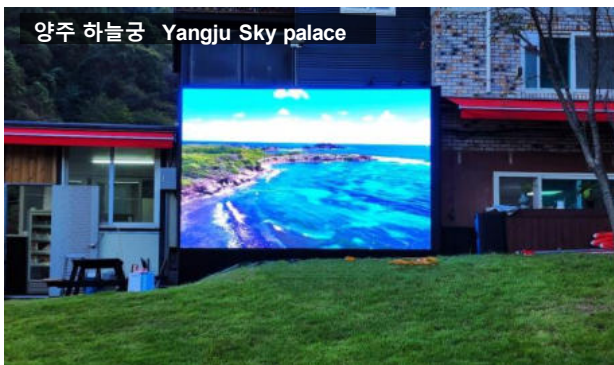
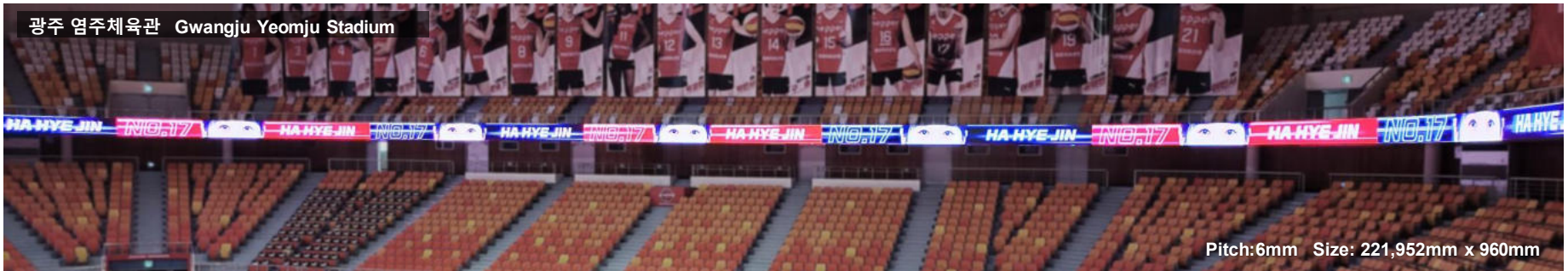
02 — BUSINESS PERFORMANCE

I Indoor & Outdoor _ LED



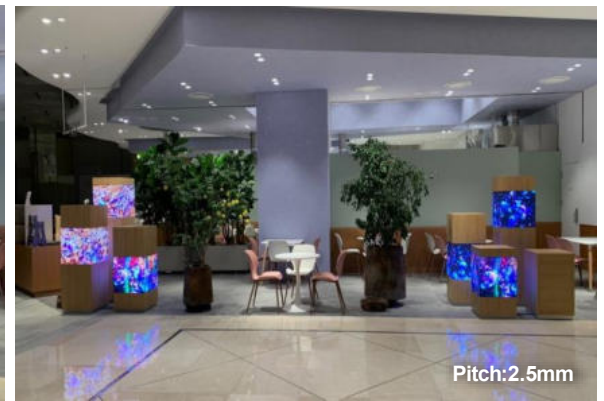
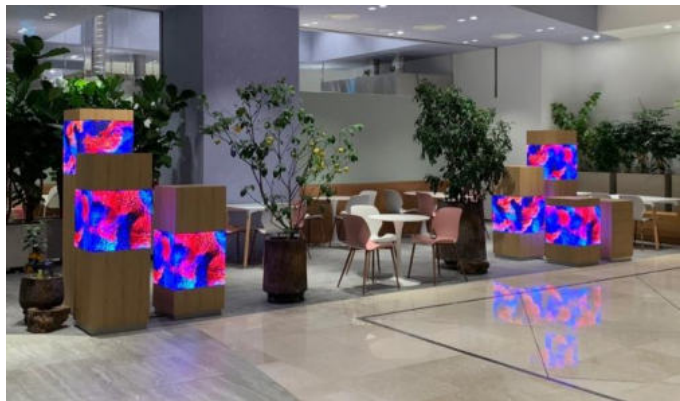
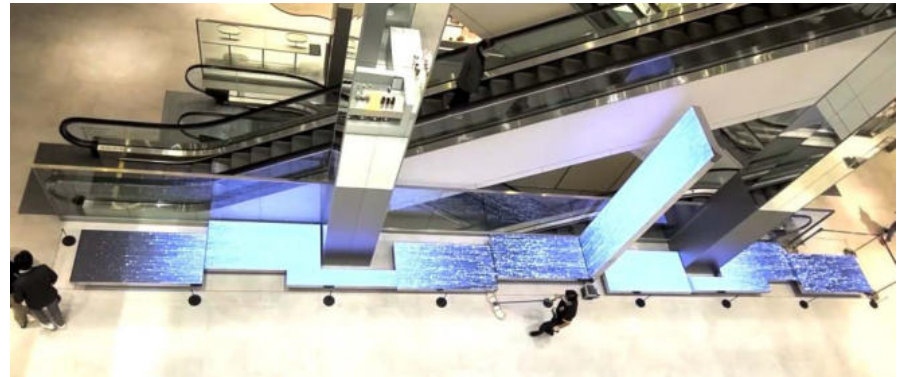
02 — BUSINESS PERFORMANCE

I Indoor & Outdoor _ LED



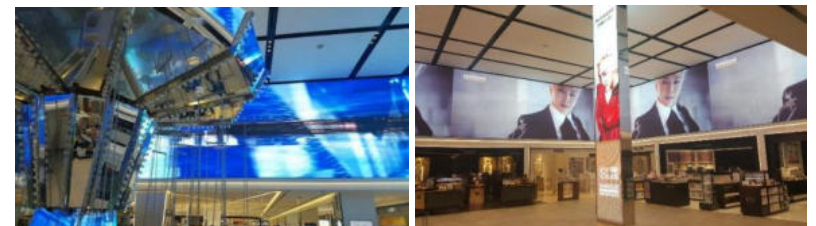
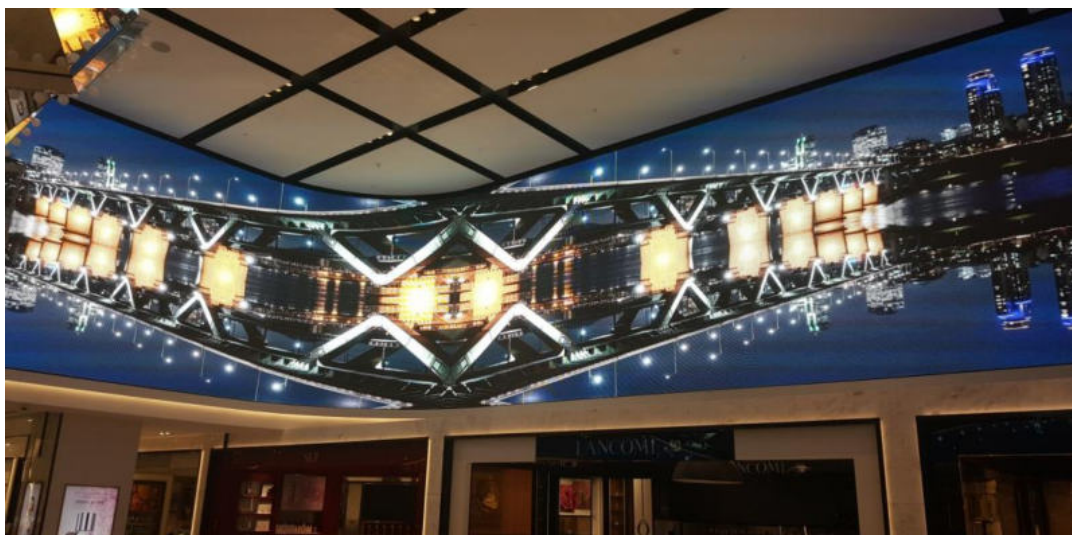
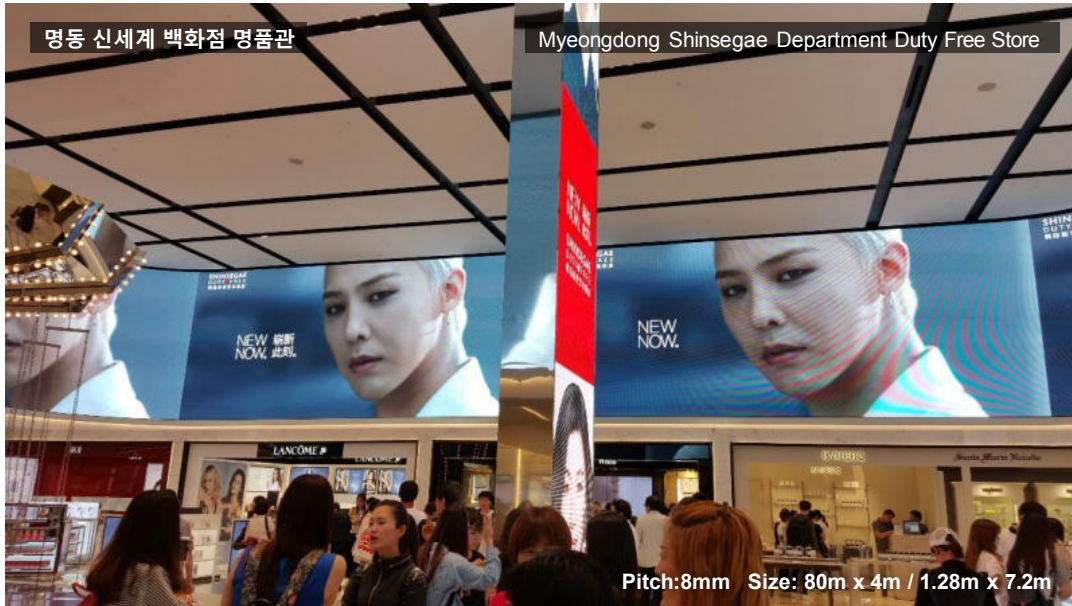
02 — BUSINESS PERFORMANCE

I Indoor _ Department store LED



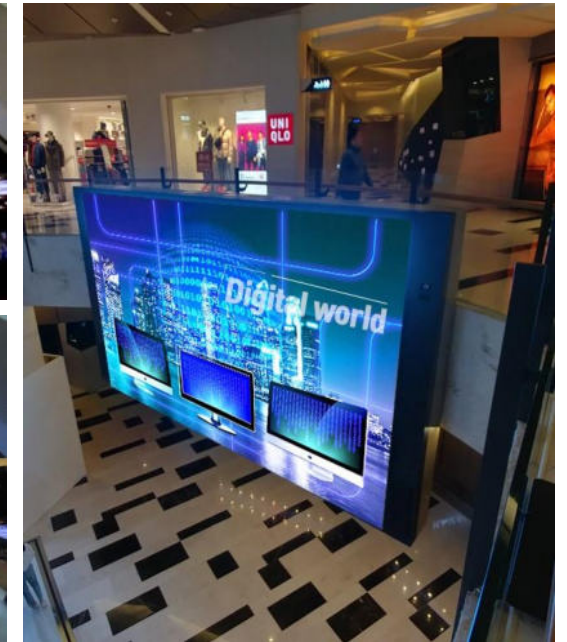
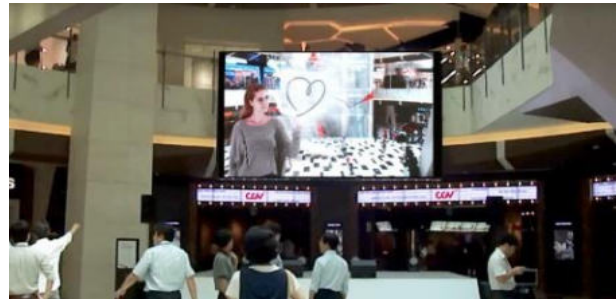
02 — BUSINESS PERFORMANCE

I Indoor _ Department store LED



02 — BUSINESS PERFORMANCE

I Indoor _ Department store LED



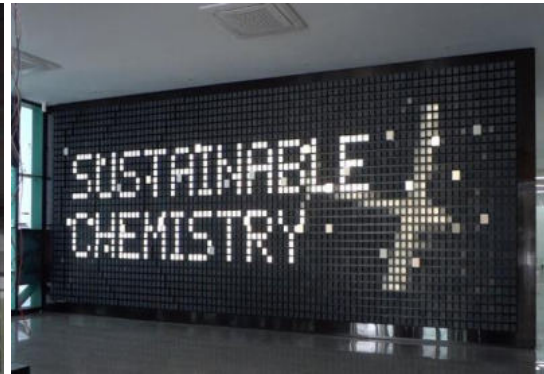
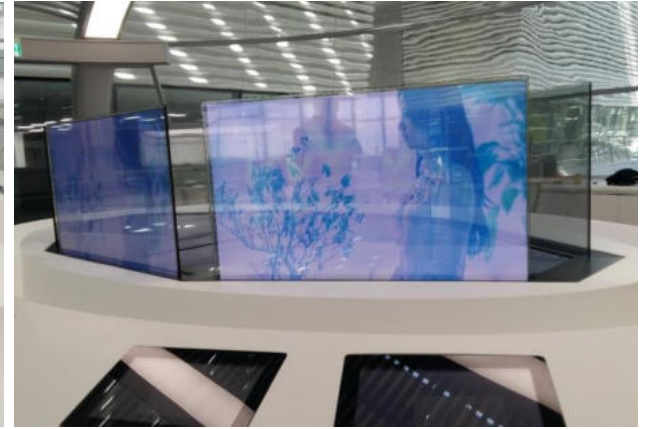
02 — BUSINESS PERFORMANCE

I Indoor _ Media Art LED



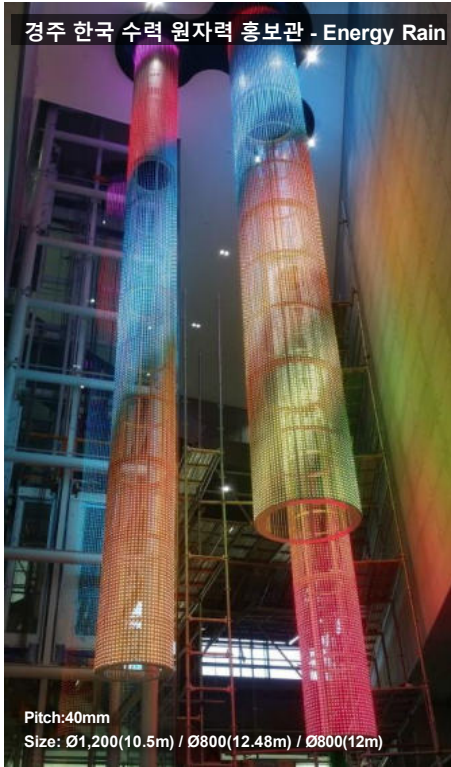
02 — BUSINESS PERFORMANCE

I Indoor _ Media Art LED - LED & QLED



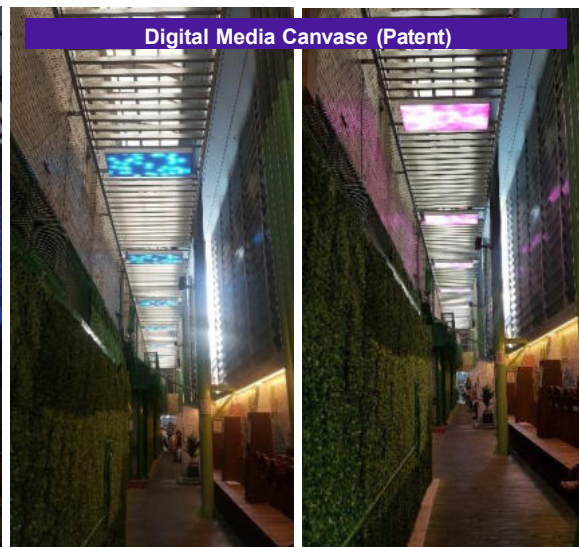
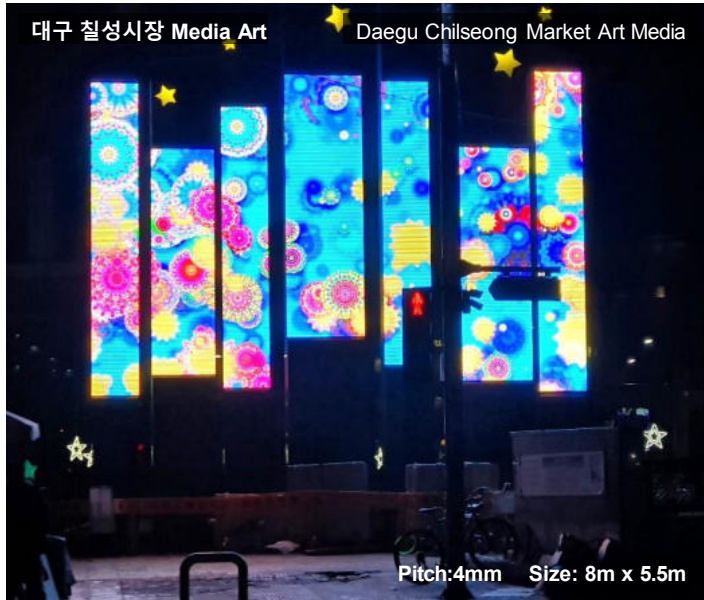
02 — BUSINESS PERFORMANCE

I Indoor & Outdoor _ Media Art LED



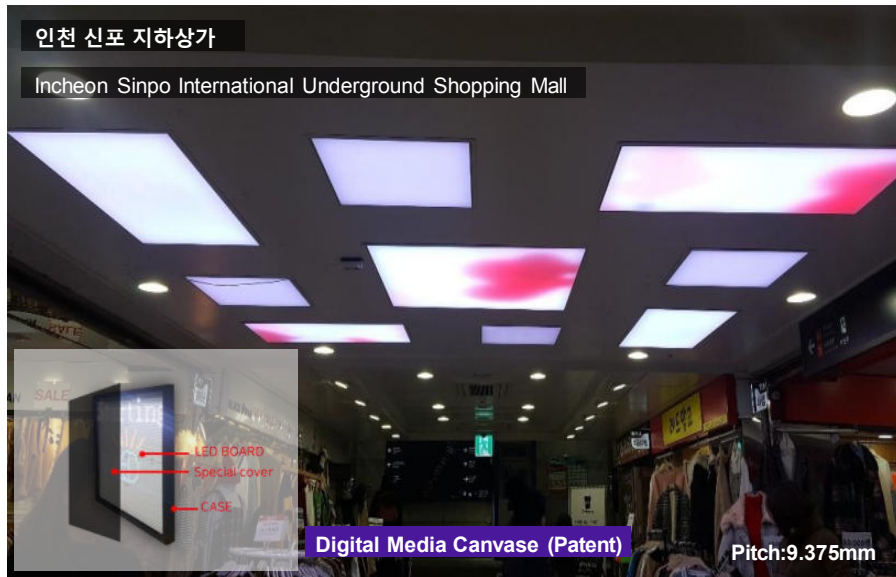
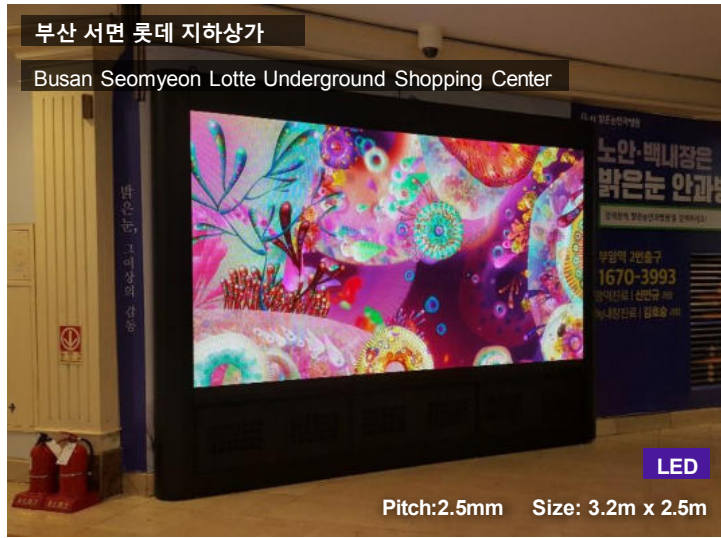
02 — BUSINESS PERFORMANCE

I Outdoor _ Media Art LED



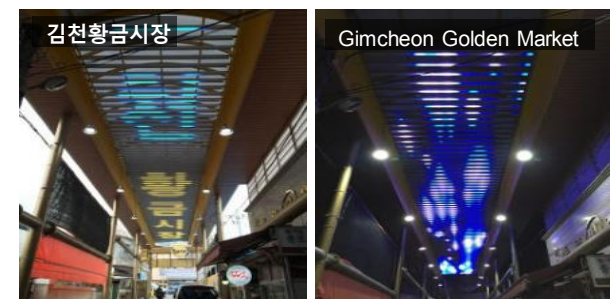
02 — BUSINESS PERFORMANCE

I Indoor _ Underground mall & Traditional market LED



02 — BUSINESS PERFORMANCE

I Indoor _ Traditional market LED



02 — BUSINESS PERFORMANCE

I Indoor & Outdoor _ **관공서 Office LED**



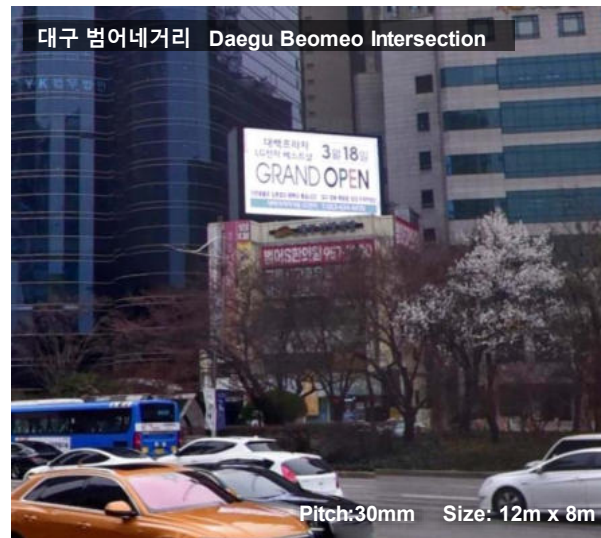
02 — BUSINESS PERFORMANCE

I Outdoor _ 대학교 University LED



02 — BUSINESS PERFORMANCE

| Outdoor_LED



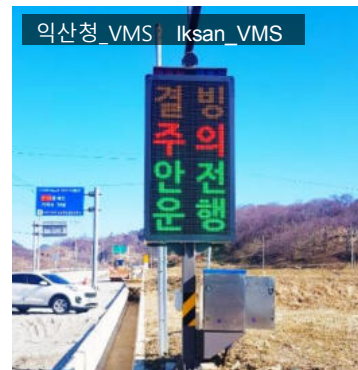
02 — BUSINESS PERFORMANCE

I Outdoor_LED



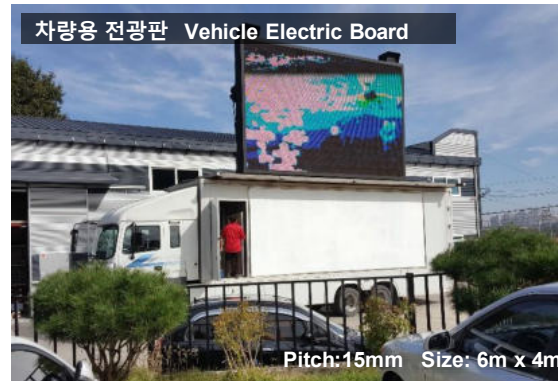
02 — BUSINESS PERFORMANCE

I Outdoor_ 교통정보 BIT / VMS



02 — BUSINESS PERFORMANCE

I Outdoor _ 환경/교통안전 Environment / Traffic safety LED



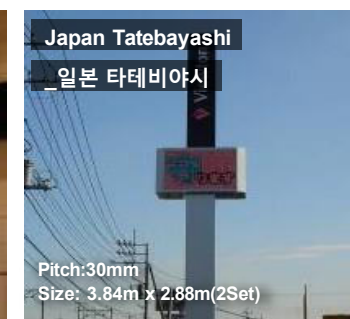
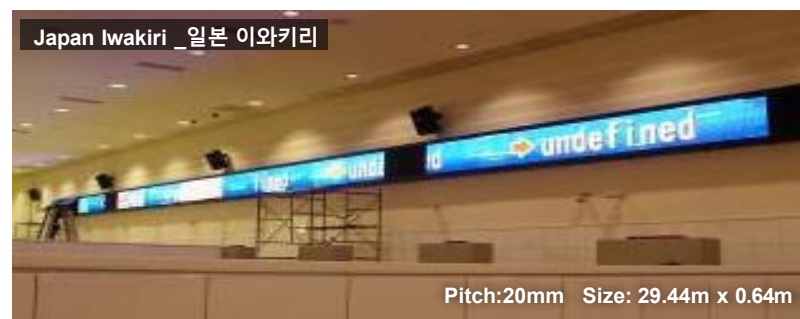
02 — BUSINESS PERFORMANCE

I Outdoor _ 운동장 General Stadium LED



02 — BUSINESS PERFORMANCE

I 해외실적 _ Overseas performance



02 — BUSINESS PERFORMANCE

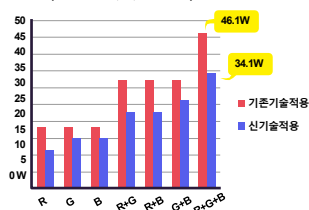
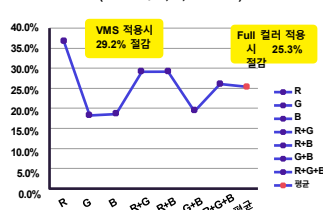
I 해외실적 _ Overseas performance



03 — NEW PRODUCT

[특허-1] 절전형 LED 전광판 시스템 (10-0948057_2010.03.10)

[Patent-1] Power saving LED display system (10-0948057_2010.03.10)

1. 소비전력 비교 측정
(White기준, 6,500cd/m²)2. 소비전력 감소율
(White기준, 6,500cd/m²)

본 특허기술은 전광판에 절전기능 전원시스템을 적용하여 기존기술 대비 25%이상 전기료 절감이 가능한 친환경 저전력제어기술입니다.

타사의 기술 대비 절전시스템 경쟁우위를 확보하였습니다.

In this patented technology, a power-saving function power system is applied to the electric sign board.

It is eco-friendly low-power control technology that can save electric power by 25% or more compared to existing technology.

The competitive advantage of power-saving systems compared to other companies' technology.

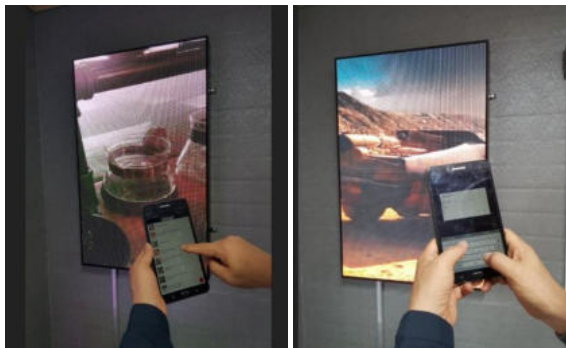
[특허-2] 이동단말기를 이용한 스마트 전광판 (10-2018-0011117_2018.01.30)

[Patent-2] Smart display board using mobile terminal (10-2018-0011117_2018.01.30)

본 특허기술은 이동단말기(휴대폰 및 태블릿)용 앱을 이용하여

원격으로 제어(전광판 동영상 및 이미지, 문자 표출제어, 편집, 전원제등)하는 기술로 편리하게 전광판(또는 디스플레이)을 제어/운영이 가능하며 언제, 어디서나 운영관리가 가능한 최적화 기술입니다.

This patented technology utilizes application technology for mobile terminals (cell phones and tablets). Remote control (electronic signboard video and image, text display control, editing, power control, etc.) technology enables convenient control and operation of electronic signage (or display). It is an optimization technique that can be operated and managed anytime, anywhere.



03 — NEW PRODUCT

[특허-3] 인터랙티브 전광판 (10-1192834_2012.09.17)

[Patent-3] Interactive LED display (10-1192834_2012.09.17)

본 특허기술은 얼굴인식 및 동작인식기술을 이용하여 전광판에 인터랙티브 영상을 표출하는 기술입니다.

- 동작인식기술 : 화면을 보고 동작을 함에 따라 화면에 영상이 반응하는 효과 연출 기술
- 얼굴인식기술 : 얼굴을 인식하여 얼굴에 다양한 형태의 캐릭터영상을 겹쳐 보이게 하는 표출기술

This patented technology discloses a technique for displaying an interactive image on a display board using face recognition and motion recognition technology

- Motion recognition technology : The technology that affects the image on the screen in response to the motion of the screen.
- Face recognition technology : An expression technology that recognizes faces and overlaps various types of images on faces.



2012 여수엑스포
2012 Expo in Yeosu

강남 점프밀라노
Gangnam Jump
Milan

경기국제전시회
Gyeonggi international
exhibit
강남 CGV 전광판
CGV Gang-nam LED
display

중원CC
Joongwoon Golf
Culb

명동 전광판
Myeongdong Display
Board

종각제일은행 전광판
Jonggak Scfirst Bank Display
Board

중국천진롯데백화점 1, 2호점 경기박람회
Tianjin Lotte Department Store 1.2 Store Fair

카자흐스탄 알마티시 숄백화점
Almaty City Department Store in
Kazakhstan

부산서면롯데지하상가
Busan Lotte Underground Shopping
Center



03 — NEW PRODUCT

[특허-4] 인터랙티브 미디어캔버스 (10-1793936_2017.10.31)

[Patent-4] - Interactive media canvas (10-1793936_2017.10.31)

본 특허기술은 이미지패턴이 전면에 형성되고 그 이미지패턴의 형상을 R,G,B LED조명 및 이들의 조합을 통하여 영상효과를 극대화하여 표현할 수 있는 기술로, 전면 이미지패턴에 맞는 색상을 연출함과 동시에 카메라 통해 후면부 LED를 제어하여 전면 이미지패턴의 생동감은 물론, 심미감을 극대화 효과를 갖게 하는 인터랙티브 미디어캔버스 기술입니다.

In this patent, an image pattern is formed on the front and the shape of the image pattern can be expressed by maximizing the image effect through R, G, B LED light.

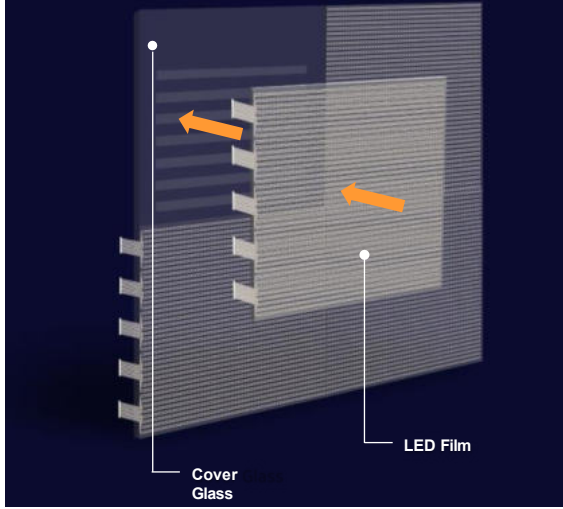
Their combination produces colors suitable for the front image. Interactive media canvas technology controls the rear LED through the camera to maximize the aesthetics as well as the vitality of the front image pattern.



03 — NEW PRODUCT

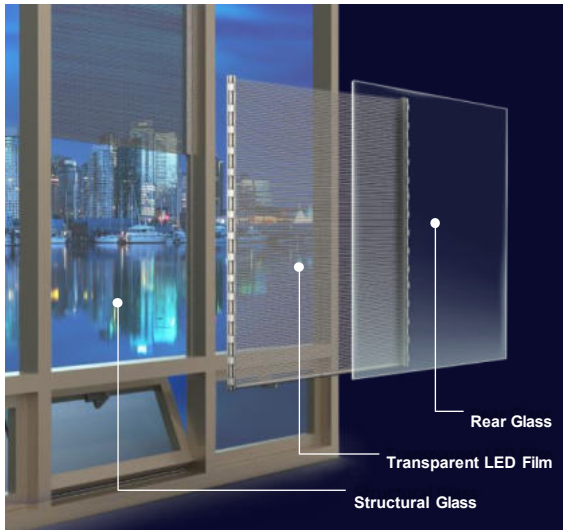
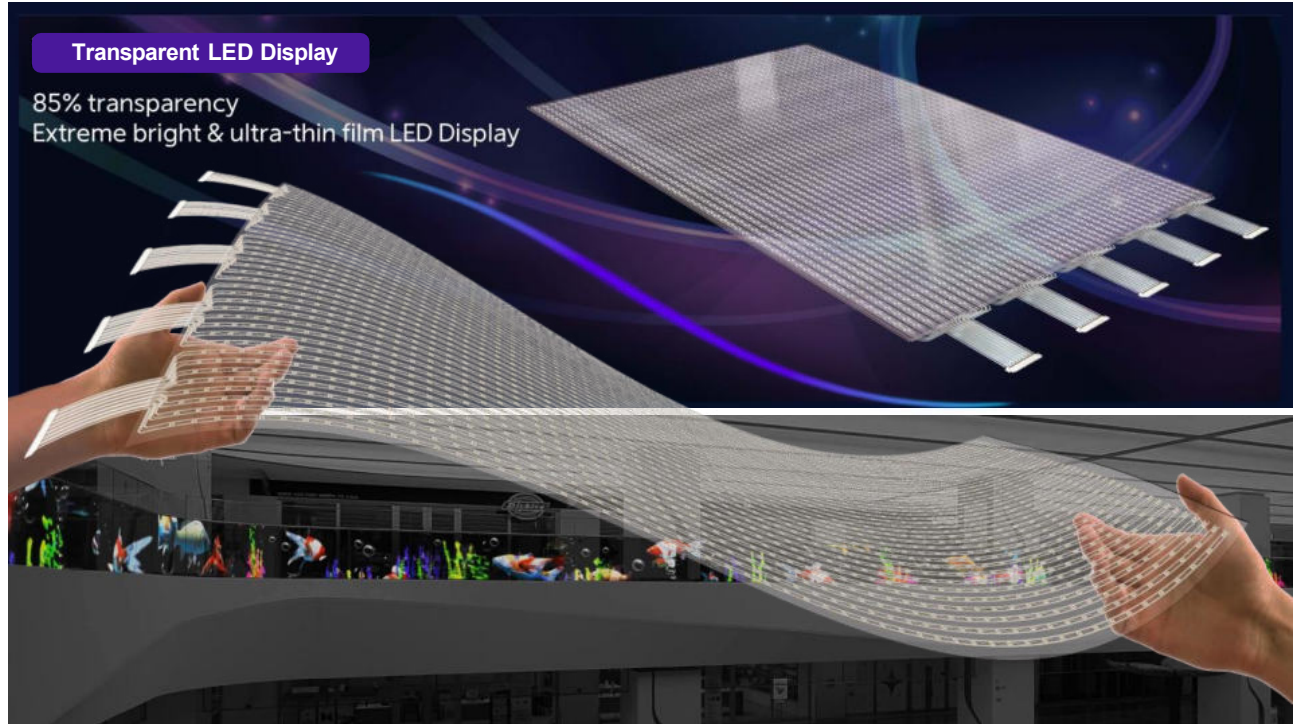
신제품 New product

Transparent LED Film



Transparent LED Display

85% transparency
Extreme bright & ultra-thin film LED Display



다양한 모양의 CUSTOMIZING(Cutting shapes)으로 다양한 모양의 유리면에 부착 가능

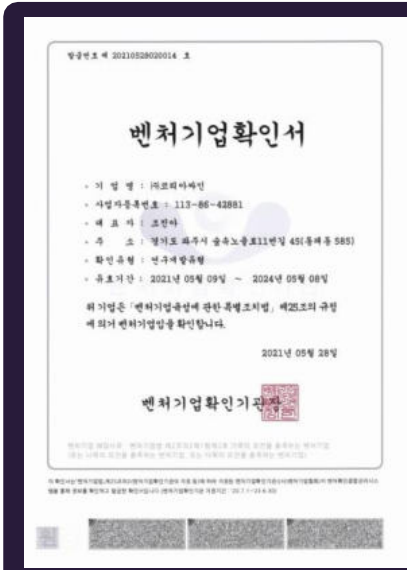
It can be customized atypical, such as triangles, diagonal lines, circles. Realization of panel circuit design diversity



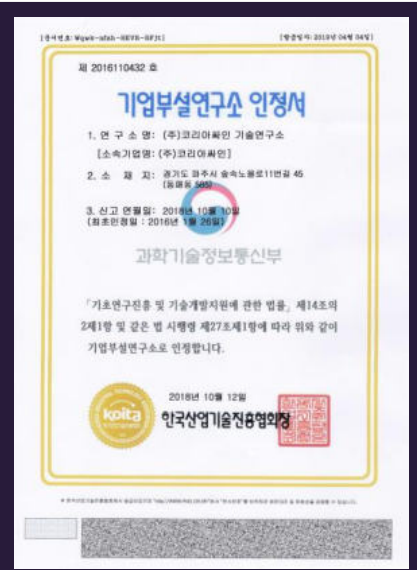
03 — NEW PRODUCT

제 목 Title	등록번호 (등록일) Registration No.	내 용 Detail
특 허 Patent	1 10-0948057 (2010.03.10)	절전형 엘이디 전광판 시스템 Power saving LED signboard system
	2 10-1192834 (2012.09.17)	인터랙티브 전광판 Interactive display board
	3 10-1664838 (2016.10.05)	휴대용 스마트 로드사인 Portable Smart Road Sign
	4 10-1793936 (2017.10.31)	인터랙티브 미디어 캔버스 Interactive Media Canvas
	5 10-1834883 (2018.02.27)	지주용 안전안내 전광판 Safety guide display board for holding
	6 10-1984002 (2019.05.24)	스마트 안전표지판 Smart Safety Signs
	7 10-2070100 (2020.01.20)	위성통신을 이용한 자기발전형 경보안내 전광판 시스템 Self-powered alarm guidance electronic signage system using satellite communication
	8 10-2103726 (2020.04.17)	인공지능 디지털 사이니지 Artificial intelligence digital signage
	9 10-2162880 (2020.09.28)	투명디지털사이니지 디스플레이 및 그를 위한 선 저항이 감소된 인쇄회로기판 Transparent digital signage display and Insaec circuit board with reduced line resistance for it
	10 10-2163947 (2020.10.05)	이동단말기를 이용한 스마트 전광판 Smart billboard using mobile terminal
	11 10-2183285 (2020.11.20)	사회적 거리 측정기 Social distance meter
	12 10-2185614 (2020.11.26)	AR광고 간판 콘텐츠를 제공하는 시스템 및 방법 System and method for providing AR advertisement signage content
	13 10-2261903 (2021.06.01)	이중화 전원 및 데이터 처리방법에 의한 재난경보안내표지판 Disaster warning information sign by redundant power source and data processing method
	14 10-2337971 (2021.12.07)	투명필름 엘이디 디스플레이에서 커넥터 빠짐에 의한 에러를 방지하는 보조장치 Auxiliary device to prevent errors due to connector disconnection in transparent film LED display
	15 10-2513303 (2023.03.20)	투명 LED의 시공시간단축을 위한 카세트 타입 설치 구조의 장치 Cassette type installation structure device to reduce construction time of transparent LED
실 용 신 안 Utility model	20-046280692012.09.25)	바형 미디어보드 bar type media board
디자인등록 Design registration	30-0868505(2016.08.11)	휴대용 전광판(기본형) Portable electronic signboard (basic type)
	30-0868506(2016.08.11)	휴대용 전광판(확장형) Portable Electronic Signboard (Expandable Type)
저작권등록 Copyright registration	C-2016-034531(2016.12.27)	PVMS 모바일 운영 프로그램 PVMS mobile operating program
	C-2019-034532(2016.12.27)	PVMS 운영서버 프로그램 PVMS operating server program
	C-2019-014116(2019.05.17)	전광판 및 DID 통합 운영관리 프로그램 Electronic Signboard and DID Integrated Operation Management Program
GS인증 GS Certif	19-0210	비전플레이어 1 _Good Software 인증Vision Player 1 _Good Software Certification
환경표지인증 Environmental sign certification	제20009호	발광다이오드 전광판 친환경인증Light emitting diode signboard _ Green certification
벤처기업확인 Venture company confirmation	제20210528020014호	벤처기업(연구개발기업)
우수벤처인증 Excellent venture certification	19-18 (2019.07.01)	우수벤처인증_벤처기업협회
기업부설연구소 Institute of technology center	제2016110432호	(주)코리아싸인 기술연구소
ISO인증	ITS-KQ-00525	ISO 9001 _ ITS : LED전광판,Digital Signage에 대한 개발,생산,설치 및 부가서비스
ISO인증	ITS-KE-00299	ISO 14001 _ ITS : LED전광판,Digital Signage에 대한 개발,생산,설치 및 부가서비스
기술역량우수기업증	NICE-2021-36-000241	T3 _ 나이스평가정보주식회사
KC적합등록 KC conformity registration	MSIP-REM-KSg-KORASIGN-1000	출입문 통제장치 (2016.11.09) door control device
	MSIP-REM-KSg-KBF043232B-01	버스 및 차량정보안내장치 (2017.01.12) Bus and vehicle information guide device
	MSIP-REM-KSg-KORASIGN-1001	CCTV CAMERA (2017.03.15)
	R-REM-KSg-KSBIT0312A	버스 및 차량정보안내장치 (2018.06.29) Bus and vehicle information guide device
	R-R-KSg-KSBIT0312B	버스 및 차량정보안내장치 (2018.08.16) Bus and vehicle information guide device
	R-R-KSg-KSL160F3225B	LED MODULE (2019.08.23)
	R-R-KSg-KSBIT0306B	버스 및 차량정보안내장치 (2019.11.22) Bus and vehicle information guide device
	R-R-KSg-KSFTLD-P05	플렉서블 투명 LED 디스플레이(2023.04.28) Bus and vehicle information guide device
직접생산확인증명 Registration of KC conformity	제2018-0261-00135호	안내 / 기상 / 교통 전광판 Information / Weather / Traffic Electronic billboard
	제2018-0054-00015호	전광판 스코어 Billboard score
	제2018-0279-00034호	열차행선안내장치 Train route guidance device
	제2018-0405-00015호	디지털영상정보안내시스템 Digital image information guide system
	제2019-0596-00054호	버스 및 차량정보안내장치 Bus and vehicle information guide device
제2023-0520-00305호	교통안전표지 Traffic safety sign	
정보통신공사 Information and Communication Corporation	제350276호	정보통신공사업등록 (2017.02.06) Information and communication construction business registration
디자인전문회사 design company	제07861호	산업디자인전문회사 (2018.04.06) Industrial design company
중소기업확인	0010-2020-82379	중소기업확인서(소기업)

04 — CERTIFICATE



Venture company confirmation –
Venture company (R & D company)



Recognized as an affiliated
research institute



Certification – ISO9001



Certification - ISO14001



Patent - Power saving LED signboard
system



Patent - Interactive display board



Patents - Smart Safety Signs



Patent - Portable Smart Road Sign

04 — CERTIFICATE



Patent - Interactive Media Canvas



Patent - Safety guide display board for holding



Patent - Artificial intelligence digital signage



Patent - System and method for providing AR advertisement signage content



Patent - Disaster warning information sign by redundant power source and data processing method



Patent - Transparent digital signage display and Insee circuit board with reduced line resistance for it



Patent - Self-powered alarm guidance electronic signage system using satellite communication



Patent - Auxiliary device to prevent errors due to connector disconnection in transparent film LED display

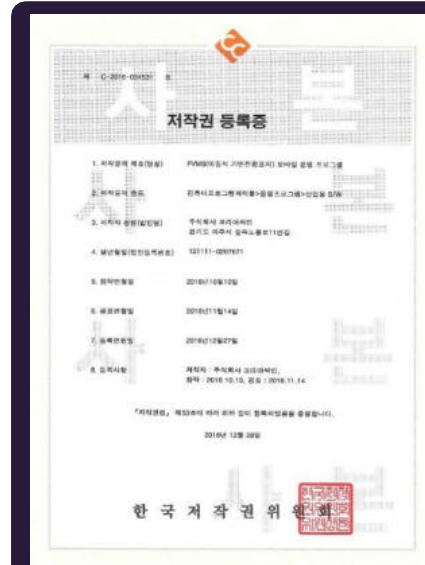
04 — CERTIFICATE



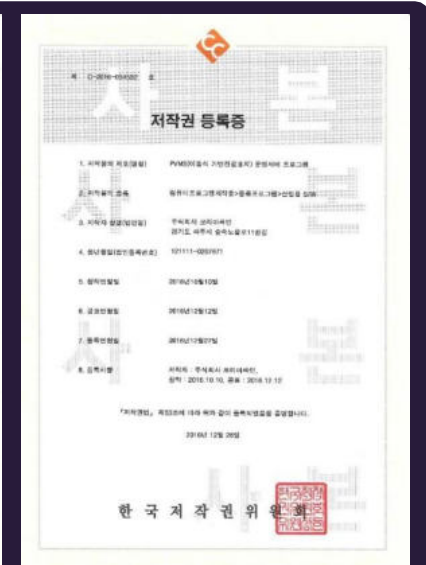
Design Registration - Display Signboard (Basic type)



Design Registration - portable electronic signboard (expansion type)



Copyright registration - PVMS mobile operating program



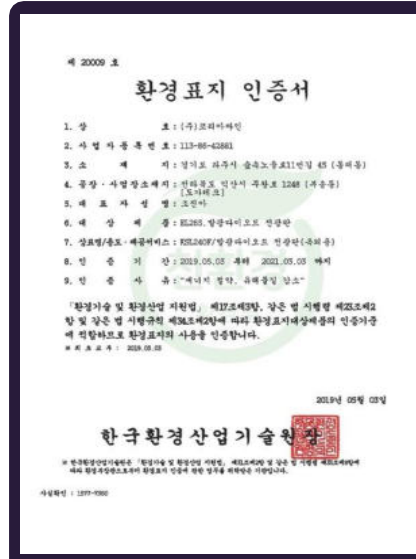
Copyright registration - PVMS operating server program



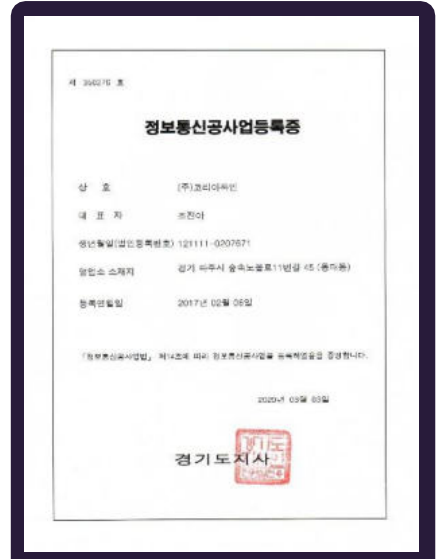
Copyright registration - Electronic Signboard and DID Integrated Operation Management Program



GS Certification-Vision Player 1 (Grade 1 Good Software)



Eco-label certification - Light-emitting diode signage_Eco



Information and communication construction business registration certificate- 2017. 02. 06

Company Name

KOREASIGN CO., LTD.

Home Page

www.koreasign.co.kr

Types of Business

LED display board, Interactive media solution

Korea Head Office & Factory

282-14, Deogi-ro, Ilsanseo-gu, Goyang-si, Gyeonggi-do, Republic of Korea
TEL 82-31-924-0477 / FAX 82-31-949-0477

China Factory

WEIHAI AKAMI ELECTRONICS CO., LTD.
Xi Hai Industrial Park, Yang Ting Town, Huan Cui Zone, Weihai, China TEL 86-631-576-8830 / FAX 86-631-576-8832